



Tudor Grange Academies Trust

Educational Visits Policy

Document title	Educational Visits Policy
Author/originator	S Groutage
Date of Approval	12 th December 2018
Approving Committee	MAT Board
Version	3.1
Policy review date	December 2020

1. INTRODUCTION

1.1. Statement of intent

Tudor Grange Academies Trust (TGAT) believes that educational visits are a core element of pupils' education and is committed to ensuring that opportunities are maximised for participation in good quality visits.

It is TGAT's intention that all practicable steps will be taken to meet statutory requirements, recognised codes of practice and government guidance in establishing a safe and healthy environment on educational visits.

We believe that participation in high quality visits by pupils and staff will enhance development and wellbeing, promote positive interactions between pupils and staff and will also improve overall school performance and ethos.

TGAT will ensure that each academy is provided with sufficient resources to plan and conduct high quality educational visits and that staff will be provided with training and advice to organise and manage them safely. TGAT will also ensure that through academy leadership, all staff know they have a duty to take reasonable care to avoid injury to themselves and others, and to co-operate with the academy management to ensure statutory duties and obligations are fulfilled.

1.2. Policy aims

This policy aims to:

- outline TGAT's requirements for managing and running educational visits;
- detail the procedures for ensuring suitable and sufficient risk assessment;
- detail who is responsible for what aspects of educational visit safety management.

1.3. Policy scope

This policy applies to all TGAT establishments and all educational visits, defined as learning activities that take place beyond each academy's premises.

It does not apply to:

- work experience, which has a separate policy and separate government advice;
- local, frequent sporting activities or physical education (PE), as explained below;
- activities conducted outdoors but within an academy's boundaries, as the safety of these is managed under standard academy policies and processes. This includes the Top Barn Farm.

As above, the risk management of all PE fixtures falls outside this policy as sporting activities come under the remit of the PE department, thus teachers leading or supervising PE fixtures outside the school grounds need to follow the guidance of their PE training and the AfPE. A separate document outlining the process for the authorisation of PE Fixtures by PE heads of department has been sent to all academies and can also be found on Transform. However, the risk management of the travel to and from PE fixtures does fall under this policy and can be considered in the same way as travel to and from any visit. Any other, non-sports fixture trips undertaken by the PE department are Educational Visits and should be approved as such.

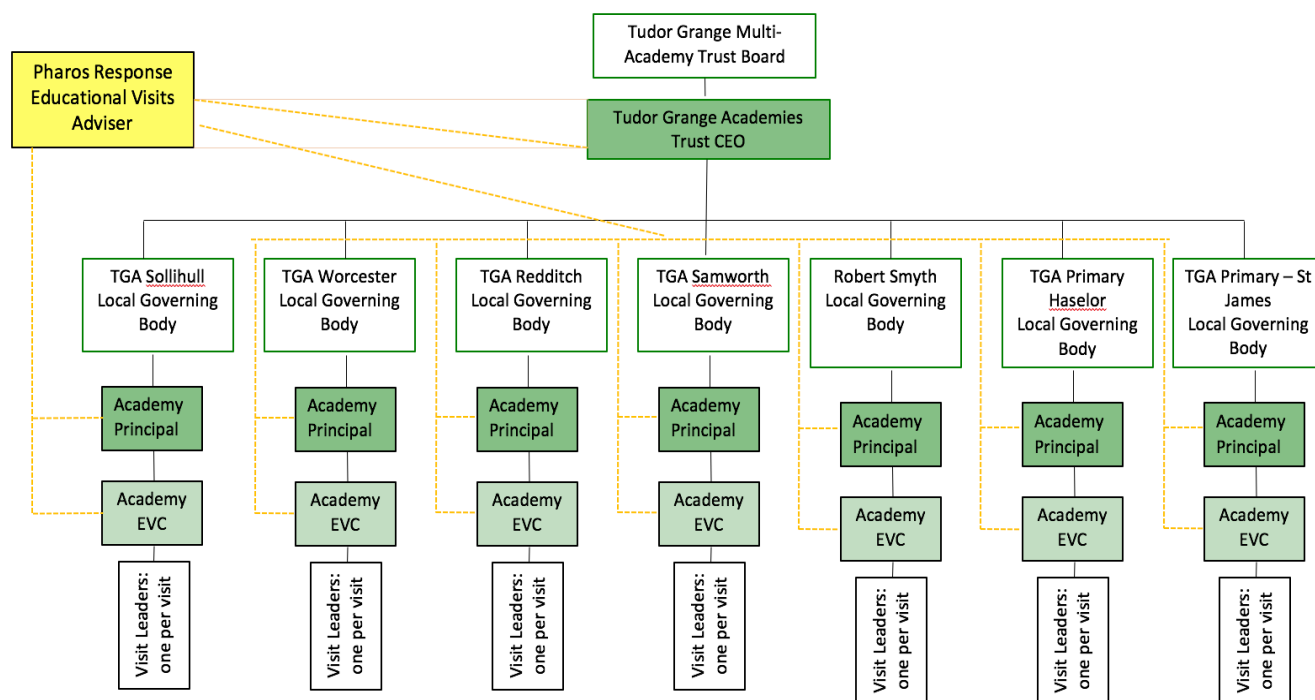
CCF activities and visits also fall outside of this policy. The process for authorising these activities is managed by the MOD and is robust and detailed. However, there remains a requirement for each academy to be aware of when staff and pupils are off-site on CCF activities, to know the outline details and to retain risk-management control of any element that is not approved by the MOD, such as academy-organised transport. To that end, a CCF Visits Notifications Process has been proposed and put into operation in the relevant academies. A copy of this can also be found on Transform.

This policy is informed by DfE guidance - *'Health and Safety: advice on legal duties and powers'* February 2014 and will be reviewed annually or after any changes of legislation or approved codes of practice. This policy is also informed by the [Outdoor Advisers' Panel National Guidance](#), to which Educational Visit Coordinators (EVCs), Visit Leaders and others should refer.

1.4. Educational Visit objectives

Every educational visit must have clear aims and objectives designed to support and enhance curriculum delivery. Clear curriculum links, identifiable in the individual academy's curriculum programme, should be set out in the eVisit Form.

2. ROLES AND RESPONSIBILITIES



Organogram depicting the organisation, approval and advisory process for TGAT Educational Visits as at September 2017.

2.1. The CEO and Tudor Grange Multi Academy Trust Board

The Health and Safety at Work etc Act 1974, places overall responsibility for health and safety with the employer, which is the Tudor Grange Multi-Academy Trust Board (MATB).

To meet these responsibilities, Tudor Grange MATB will:

- provide an Educational Visits (EV) policy and ensure it is reviewed annually;
- set procedures for the planning, management and approval of EVs;
- ensure staff are adequately trained, guided and supported so they can plan and carry out safe, educational visits that are in line with the TGAT policy;
- ensure individual establishments are suitably resourced to comply with policy requirements;
- determine the charging and remissions policy and appropriate procedures for the financial management of visits having regard to any government guidance;
- monitor compliance by each Academy.

2.2. The Local Governing Body

Each academy Local Governing Body (LGB) will ensure that:

- approved EV policy and procedures, are informed by and in-line with the TGAT Educational Visits Policy and are determined, implemented and reviewed annually;
- staff are adequately trained and supported;
- there is a clear approvals procedure in place;
- they monitor compliance by staff and management at their Academy.

2.3. The Principal/Head of School

The Principal of each academy has responsibility for the development and implementation of EV procedures and conditions for all staff and pupils.

The Principal will:

- ensure that procedures are in place to manage EVs, and that a review mechanism is in place;
- appoint a suitably competent EVC;
- ensure that the EVC is appropriately trained and has sufficient time and authority to fulfil their role;
- keep the LGB informed of visit arrangements in a timely manner so they can ask questions as necessary;
- ensure that appropriate insurance arrangements are in place;
- inform the TGAT CEO or MATB of any concerns or issues as early as possible;
- ensure that there is a process to obtain best value for individual visits;
- personally approve all **overnight*** **adventurous*** and **abroad*** educational visits.
- inform the LGB of all overseas visits;
- ensure that suitable emergency procedures are in place, including procedures to ensure parents** are appropriately informed in the event of a serious incident and that TGAT reporting procedures are followed;
- ensure that critical incident management plans are in place for dealing with an emergency;
- seek advice from Pharos (TGAT's EV adviser) Response when necessary.

* Default, overnight, adventurous and abroad are the four visit categories for all TGAT visits and link to the eVisit approval process. See section 4.2.

**throughout this policy, the term 'parent' shall include all adults with legal parental responsibility for children

2.4. Pharos Response Educational Visits Adviser

The function of the Educational Visits Adviser (EVA) has been set out in the 'Service Level Agreement' between Pharos and the TGAT and includes:

- providing competent advice and support to key customer contacts at TGAT – usually the EVC and Principal of each academy;
- delivering training for EVCs and Visit Leaders at establishments across TGAT;
- desktop and field visit monitoring of selected visits across the academies;
- annual Governor briefings at each academy for quality assurance purposes and to update LGB's on academy EVs and policy compliance;
- initial support in developing a robust Trust wide EV Policy and specific EV policies for each academy, where necessary;
- informing the Principal, LGB and MATB of national requirements and good practice;
- Organising and attending termly (if practicable), centralised EVC Forums for knowledge sharing and updates.

2.5. Educational Visits Coordinator

The functions of the EVC will be agreed with the Principal at each academy and will include a requirement to:

- ensure EVs meet TGAT procedural requirements and that the EV Checklist is followed (see EV Checklist on Transform);
- advise the academy Principal and LGB on any issues concerning the approval of visits;
- approve all **default*** EVs and pass to the Principal for approval those activities that involve overnight stays, adventurous activities or trips abroad;
- pass all abroad trips to the Pharos EVA for review before they are approved by the Principal. This process will be done automatically by the eVisit IT system;
- assess the competence of prospective leaders and staff in terms of qualifications and/or experience and organise appropriate training and induction;
- ensure that DBS disclosures required in support of any educational visit are in place as necessary;
- ensure that emergency arrangements are in place for each visit;
- keep records of visits, incidents, accidents and near misses on the usual academy system and as a visit note on eVisit, where appropriate;
- review the use of the eVisit management system and monitor practice;
- report all incidents to the Principal at the earliest opportunity;
- be an active member of the EVC Forum chaired by Pharos;
- ensure that pre-visits have taken place wherever feasible.

2.6. Visit Leaders

The leader in charge of any academy EV must be competent, confident, and an employee of or otherwise contracted directly by the academy. For further information about the TGAT's guidelines on suitable activity leaders, please see the Supplementary Guidance Notes on Transform.

Each academy has delegated the following responsibilities to Visit Leaders:

- a) to plan the visit appropriately including assessing the risks of activities and recording any significant findings;
- b) to prepare the visit in conjunction with other leaders;

- c) to supervise the visit and ensure planned control measures remain suitable and are followed;
- d) to prepare contingency and emergency plans;
- e) to carry out dynamic risk assessments to take into account changing environment, conditions or the group. An ongoing assessment may lead a Visit Leader to turn to a Plan B.

For further information on roles and responsibilities see [Outdoor Education Advisor Panel National Guidance](#).

2.7. Volunteers

Any adults on the visit not employed by the academy must be clear about their roles and responsibilities during the visit.

Adults not employed by the academy who are acting as supervisors must:

- be DBS cleared, where reasonably practicable, but if the visit is overnight then this is a mandatory requirement. Otherwise, as a minimum, a 'Volunteer risk assessment' must have been completed and approved by the Principal;
- do what is reasonably practicable to ensure the health and safety of everyone in the group;
- be clear about the objectives of the visit;
- attend briefing meetings and participate in all relevant activities;
- not be left in sole charge of pupils;
- follow the instructions of the Visit Leader and academy employed staff, and help with control and discipline;
- speak to the Visit Leader or academy employed staff if concerned about the health or safety of pupils at any time during the visit or if concerned about any aspect of the visit prior to its departure;
- never be in a situation remote from the support of the leaders or other appropriate members of staff.

2.8. Educational Visit Learning Zone supervision

Pharos will support each academy to create a 'Learning Zone' for educational visits that take place during the school day as part of the curriculum. These Learning Zones will be covered by a generic risk assessment, operating procedures, and general parental consent. Refer to the Learning Zone Briefing Document on Transform for more information. Once the Learning Zone has been established, any member of staff judged competent by the EVC/Principal can take pupils to the Learning Zone without additional risk assessments or consent unless factors change that alter the risk assessment findings. The Learning Zone risk assessment should be reviewed annually by each academy.

Pharos will inform all staff organising EVs on the use of the eVisit system and will carry out weekly desktop checks on each establishment to help ensure the eVisit system is being used effectively.

2.9. Quality assurance and oversight

Pharos will attend and present at one of the LGB meetings at each Academy annually, in order to provide an update to the LGB and ensure their oversight of EVs. The purpose of this presentation is to:

- ensure effective checks and balances are in place for educational visits and are being used;
- share and record achievements;
- inform the Principal and LGB on good practice revisions or updates;
- answer any questions that the LGB may have.

Pharos will also facilitate a termly, centralised EVC Forum where EVCs will come together to share lessons learnt, updates, discuss challenges or successes and ensure EV consistency across TGAT.

2.10. Legal compliance and raising concerns

All members of staff should be concerned about any serious and immediate risk, and also about any systemic shortcomings. If the concerns cannot be settled amongst the staff leading the activity, all staff will be expected to stop the activity and refer the matter to the emergency SLT contact.

TGAT recognises the right of members of staff to refuse to participate in an activity which they consider unsafe. In such cases an alternative arrangement can be made with consent from the SLT.

2.11. Data protection and GDPR

All members of staff should be aware of and compliant with TGAT's GDPR policy and should manage visit data in accordance with TGAT's guidelines. This may include Visit Leaders ensuring that other providers being used, e.g. activity providers, flight carriers, venues etc are collecting, storing and using personal data, when required, appropriately.

TGAT remains the Data Controller for any visit-related data and will ensure that any data-processing third parties are assessed and approved and that consent is correctly gained.

3. RISK MANAGEMENT AND RISK BENEFIT ANALYSIS

TGAT supports the principle of risk benefit assessment. The aim of EVs is not to make the activity as safe as possible but as safe as it needs to be to maximize the learning outcomes whilst keeping an acceptable level of residual risk.

Visit Leaders who are in doubt about the balance of benefit and risk should consult the EVC. The EVC is empowered to make decisions on the balance of benefit and risk. Where the EVC is unsure he/she can consult the EVA at Pharos Response to ask for advice.

3.1. Risk Assessments

In order for a trip to be approved to go ahead, a written risk assessment must be submitted by the Visit Leader. Example risk assessments, created by Pharos Response, can be made available, on request, to use as starting points. It is **imperative**, however, that the Visit Leader takes ownership of any generic risk assessment by making it relevant to their particular trip. This means they should take into account not only the activities being undertaken, but any specific needs of individuals on the trip.

Template blank risk assessments can be downloaded from eVisit and Transform and it is requested that the Visit Leaders use this template so that risk assessments are standardised across TGAT. In order to be a useful, compliant document, the risk assessment should contain

evidence of the knowledge of possible risks and ways to manage, avoid or mitigate them.

3.2. Risk assessing pupils with SEN, disability or medical needs

Every effort should be made to include pupils with particular additional needs where possible, in accordance with TGAT's SEND Policy and, if appropriate, individual academy's SEND Policy. Risk assessments should consider:

- any additional aids or equipment that are needed;
- any additional staff requirements – e.g. higher staff:pupil ratios (see TGAT and academy SEND policies);
- parking/access requirements for pupils with blue badge mobility issues (consider bringing the blue badge and letting venues know in advance, which may allow parking closer to the entrance);
- emergency plans and arrangements.

3.3. Dynamic risk assessments

Dynamic risk assessments will not usually be written at the time, but what was done should be recorded later in the evaluation form, and made available by the EVC for the benefit of future activities.

3.4. Involving pupils in the organisation of educational visits

It is TGAT's view that pupils are likely to manage risks better if they are involved in the planning rather than just being told what to do. Pupils should be involved in visit planning where appropriate and be trained to be 'risk aware' rather than 'risk averse'.

4. PROCEDURAL REQUIREMENTS

4.1. Learning Zones

With the support of Pharos Response, EVCs from each of the TGAT academies will designate a 'Learning Zone'. Based on specified geographical, logistical and educational parameters, this zone will encompass learning areas in which staff who have been signed-off as 'competent' can lead EVs, during the academy day, without additional consent. Generic risk assessments specifically covering the Learning Zone and activities within it will be used and blanket consent obtained from parents at the beginning of each academic year.

Only Visit Leaders who have been deemed 'competent' to lead activities in the Learning Zone, who will be recorded on a list kept by the EVC, will be able to take groups to the Learning Zone without additional paperwork. They must, however, inform the EVC or Principal before going and conform to the appropriate operating procedures.

A copy of the briefing document outlining the standard operating procedures for the Learning Zone can be found on [Transform](#). However, the operation of each Learning Zones will be subject to an establishment-specific procedure.

4.2. Visit categories

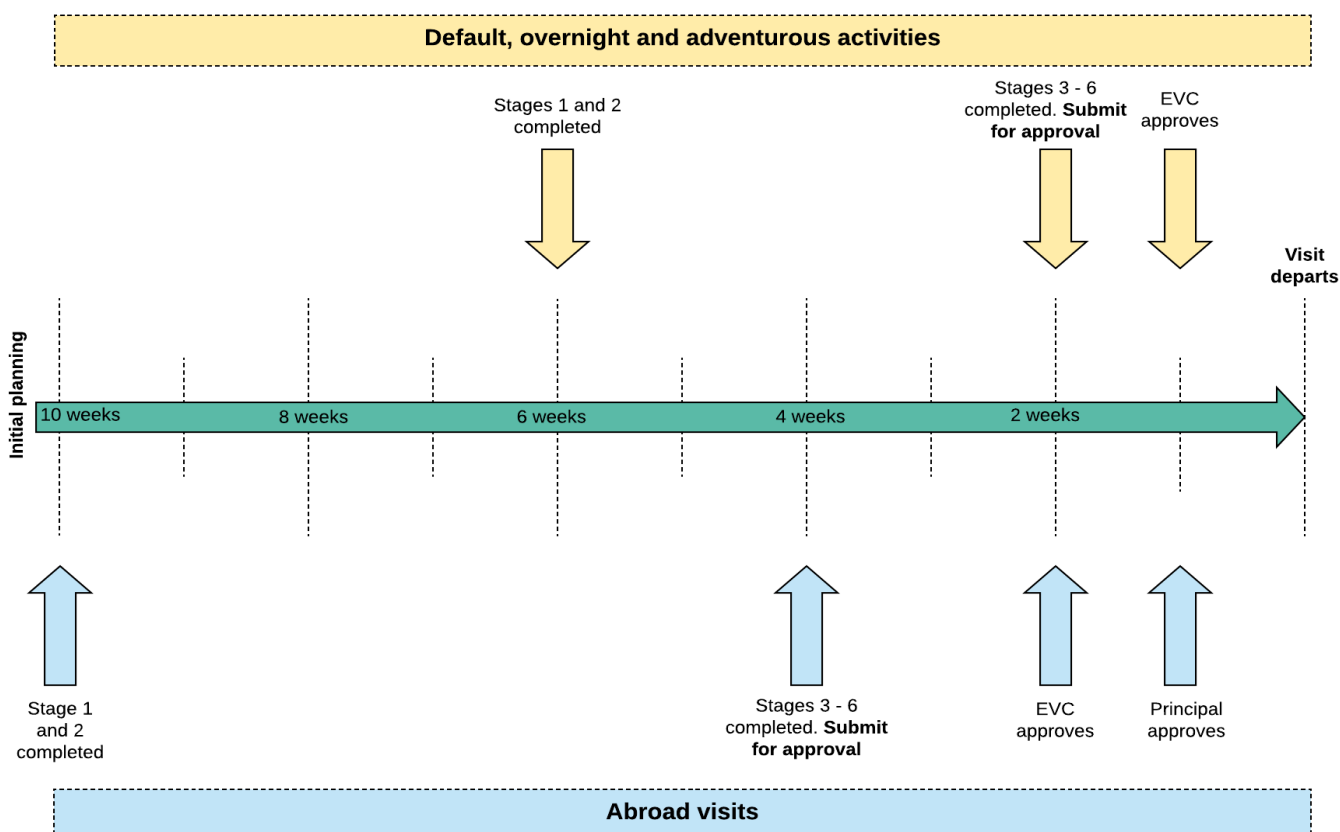
TGAT has identified four categories of EV beyond the Learning Zone, each requiring escalating levels of risk management and academy level sign-off in order to proceed. The table below shows how the visits are programmed within eVisit:

	Default	Overnight	Adventurous	Overseas
Description	Takes place in UK and does not involve an adventurous activity or overnight stay.	Takes place in UK with an overnight stay/s but not an adventurous activity.	Takes place in UK with adventurous activity, regardless of whether overnight stay or not.	Takes place abroad, regardless of whether involves adventurous activity or not.
Planning Process	Visit Leader adheres to the EV Checklist and submits the visit within the approval timelines (see below) on eVisit.			
Approval	Academy EVC will be authorised to approve trip. Can contact Pharos Response for advice, if required.	Academy EVC will give initial approval then to the Principal for sign-off. Can contact Pharos Response for advice.	Academy EVC will give initial approval then to the Principal for sign-off. Can contact Pharos Response for advice.	EVC gives initial approval and passes to Pharos Response for review before going to Principal for approval

4.3. Approvals timeline

In order for EVCs and Principals to have time to appropriately check, return for more information and approve EVs, a structured approvals timeline has been put in place, a diagram of which can be found below. It is the responsibility of the Visit Leader to ensure that they meet the timelines in order to allow the due diligence process to be completed properly by the EVC, Principal and, where required, the EVA.

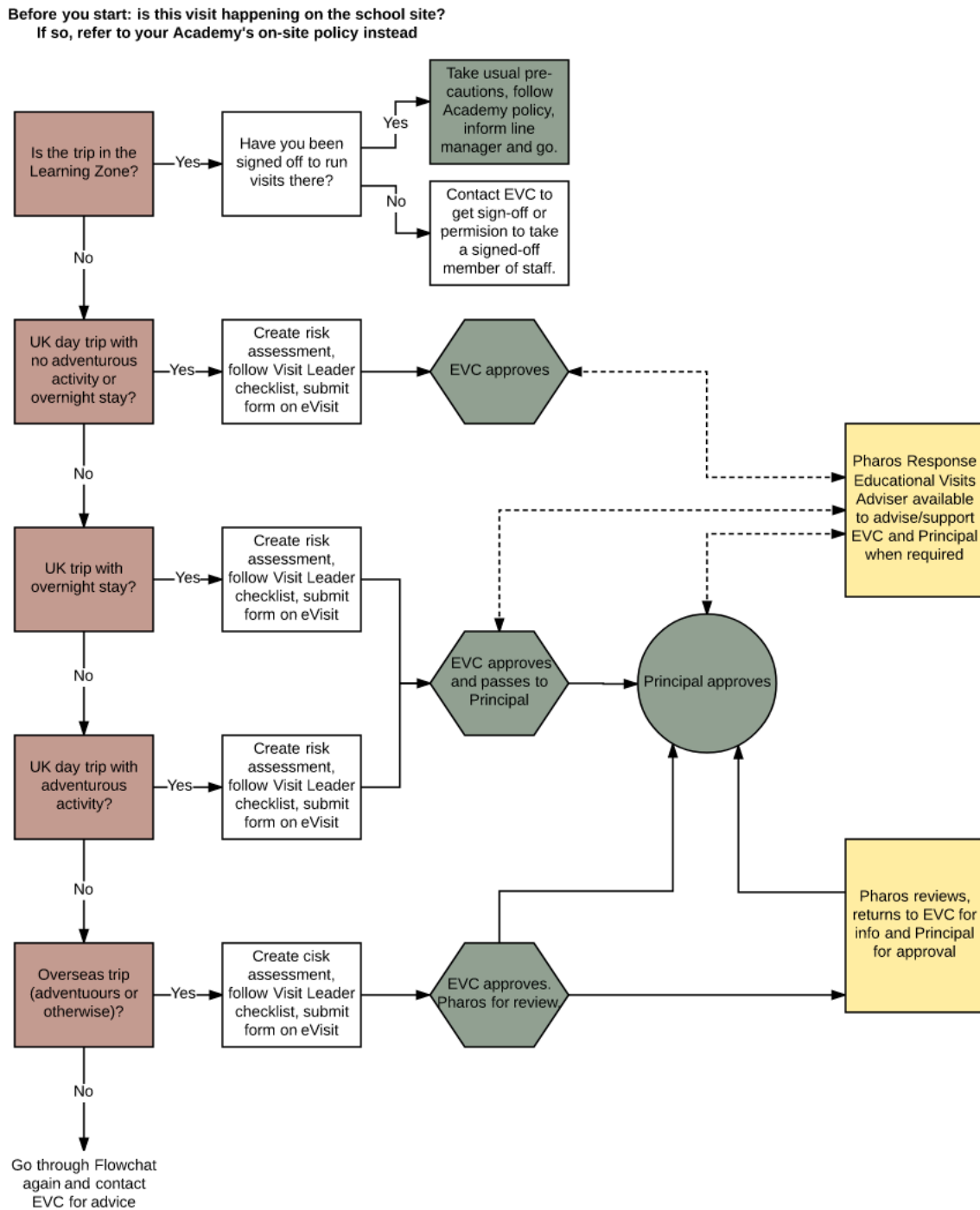
A record of staff members who repeatedly fail to submit their visits in enough time to gain appropriate approval will be kept by the EVA in order for follow-up to be carried-out by the academy SLT where required.



The stages referred to in the above diagram relate to the stages outlined on the EV Checklist. This Checklist should be uploaded to eVisit so it is clear to the EVC what has been done and in order for a clear audit trail to be maintained.

4.4. Approvals process

The flow chart below should be used in conjunction with the EV checklist on Transform to ensure the correct approvals process is adhered to:



4.5. Adventurous activities

Where an EV takes place in the UK and involves an adventurous activity, whether or not it also includes an overnight stay, the visit should be recorded as 'Adventurous Activity' in the eVisit system and approval will need to come from the Principal. The academy EVC may contact the Pharos Response EVA at any point for further advice, if required.

Where practicable, any activities of an adventurous kind should be arranged through a specialist provider. However, qualified and experienced staff may organise and run visits with the approval of the Principal.

- When planning an adventurous activity, the EVC must check that the provider holds a licence as required by the [Adventure Activities Licensing Regulations 2004](#).
- Some activities do not need to be licensed in the same way or can be covered by other accreditation marks such as the '[Learning Outside the Classroom \(LOtC\) Quality Badge](#)' system. Where the latter accreditation is in place, a detailed risk assessment need not be sought from the provider.
- If a provider does not have a Quality Badge, it does not mean they cannot be used. In this case, checks and measures should be carried out on the provider by the Visit Leader and a [Provider Statement](#) be filled out and uploaded onto eVisit. (Refer to Section 5 - Assessing Venues and Providers for further information).

Further information on activity licensing and 'badging' schemes is available on the [Outdoor Education Advisor Panel National Guidance](#).

4.6. Trips abroad

The Trust encourages [visits abroad](#). A reminder about managing these can be found in the Guidance Notes on [Transform](#). In the event of joint visits between more than one Tudor Grange academy, joint planning meetings and briefings must take place, but only one visit needs to be recorded on eVisit, set up by the Visit Leader from the lead academy. A final planning meeting must be held with at least one Principal in attendance.

4.7. Visit group lists

Both the Visit Leader and deputy (or another designated member of staff if there is no 'official' deputy,) must carry an emergency pack at all times. A pack must also be left with the visit emergency SLT contact. Emergency packs should contain, as a minimum, a list of pupil/staff emergency contact details plus ages and a sufficient medical history of all pupils, including any medication requirements and any individual care plans or risk assessments. Care must be taken by staff to put measures in place to secure this data as it will be sensitive. Any loss of data must be reported to the Principal and LGB asap and within 24hrs.

4.8. Supervision and duty

The duty of care expected of TGAT Visit Leaders is that of a reasonable, prudent and careful parent applying his or her mind to the situation. The duty is continuous during the whole period of the visit and cannot be delegated to anyone else. However, the Visit Leader should arrange a duty roster to ensure members of staff have adequate rest. It is essential that everyone involved in the visit understands the supervision arrangements and expectations.

For information on direct, indirect and remote supervision refer to [National Guidance document 4.2a](#).

4.9. Supervision ratios

Supervision ratios are determined as part of the planning and approval process. The appropriate ratio for any activity will be informed by the risk assessment where there are no specific external or stakeholder guidelines, such as National Governing Bodies, that dictate instructor:pupil ratios. The decision should take into account:

- pupil gender, age (including developmental age), ability, competence and behaviour of the members of the group;
- general and specific supervision competencies;
- special educational needs and disabilities (which should trigger a higher ratio or individual care plan(s));
- duration and nature of the activity, including any journey required to get there/back;
- location and environment of where the activity will take place, including accommodation and requirements of the venue.

Unless a trip is operating under National Governing Body regulations (as will be the case for many adventurous activities), there are **no** clear, legal requirements for adult:pupil supervision ratios. However, taking into account the OEAP National Guidance and other bodies of work, a broad suggestion for supervision is as follows:

	Learning Zone	Default trip	Overnight	Adventurous Activity	Overseas
Primary					
Nursery	1:3	1:3	-	-	-
Yrs 1 – 3	1:6	1:6	1:6	1:6	1:6
Yrs 4 - 6	1:10	1:10	1:10	1:10	1:6
Secondary	1:25*	1:15	1:15	1:15	1:10

Notes: - these are maximum ratio guidelines
 - NGB ratios **must** be observed if school staff are delivering adventurous activities
 - for SEND pupils, ratios might need to be closer
 - at least two adults, each of a different gender must accompany overnight and overseas visits
(Where this is not reasonably practicable, staff must still be able to access a member of the Safeguarding team through the on-call system)
 - at least two adults must accompany adventurous visits

* These are maximum ratios but should be informed by each academy's generic risk assessment. As the Learning Zone is a new concept, it is recommended that, where possible, at least two adults accompany Learning Zone activities, at least one of whom should be a teacher.

It is important to note that these are merely guidelines. The actual supervision ratios must be informed by the needs of the group members and the complexity of the activity and they must be agreed by the EVC. A Learning Zone visit is supposed to be one which can happen 'at the drop of a hat', therefore, in principle, a class teacher could take their entire class out into the local area as long as they and the EVC are happy that the pupils are sensible and mature enough to manage with such supervision, and if the Learning Zone controls are applied.

In each academy, the suggested ratio can be amended with the permission of the Principal, EVC and Visit Leader after the risk assessment has been submitted and before the final planning takes place. Advice may be sought from the LGB or from the Pharos Response EVA

if needed. Further guidelines can be sought from:

- [RoSPA](#) (Royal Society for the Prevention of Accidents)
- OEAP (Outdoor Education Advisers Panel) [National Guidance](#)
- NUT ([National Union of Teachers](#))

4.10. Parental consent

It is TGAT's policy that parents should be informed of ALL EVs that happen outside the normal start or finish of the academy day (including sports fixtures and local visits as part of the curriculum), or where an academy's duty of care will be exercised by contractor's staff on behalf of the academy, noting that TGAT staff can never be fully absolved of their duty of care. For these activities, consent must be obtained in the form of a written consent letter.

Should a consent form not be submitted in time, verbal consent may be gained from a parent/guardian. This must be recorded on the evaluation form and EVC/pupil services must be informed prior to departure.

- For activities taking place within the Learning Zone, or as a normal part of the curriculum within the academy day, additional parental consent need not be obtained. However, general parental consent needs to have been given at the beginning of the academic year, with parents being clearly made aware of what they are consenting to.
- If agreement cannot be reached with any parent who refuses consent, the pupil should be omitted from the activity and remain in school.
- Parents who object to their child participating in a low risk activity must be referred to the College Leader.

4.11. Consent for medical treatment

It is TGAT's policy that no pupil will be allowed to participate in an EV without having parental consent for emergency medical treatment where such treatment is considered necessary by the medical authorities. This includes pupils whose parents refuse to consent to emergency medical treatment such as anesthesia or blood transfusions for religious or other grounds. A letter explaining this, and seeking consent from parents should be sent out at the beginning of the academic year.

If abroad, a doctor may be reluctant to treat one of the group participants if the Visit Leader does not have documented consent.

4.12. First Aid

Visit Leaders must follow their own academy's first aid guidelines, within the Health and Safety Policy, when determining the first aid arrangements for an EV.

Minimum first aid provision for low-risk settings should comprise a suitably stocked first-aid box and a person appointed to be in charge of first aid arrangements. They may not necessarily be first aid qualified but will have a reasonable, working knowledge of first aid and be responsible for calling an ambulance and containing the situation, preventing further injury to pupils and staff.

For complex activities such as visits abroad or adventurous activities where 999 ambulance access may be delayed, at least one of the group's supervisors must be a suitably trained first

aider.

4.13. Safeguarding

Child safeguarding measures must be considered at an early stage of the planning. All supervisory staff or adults who are employed to instruct pupils, whether paid or voluntary must be DBS checked, or risk assessed as a minimum, before being allowed to supervise a group.

Guidance can be found in the [Safeguarding Children and Safer Recruitment in Education guidance](#).

4.14. Educational visit checklist

For a group visit checklist outlining the steps to work through when planning an educational visit, see the EV checklist on [Transform](#).

5. ASSESSING VENUES AND PROVIDERS

TGAT supports exploratory/reconnaissance visits by any member of staff who is to lead a group abroad, on a residential visit, or in a location that is not familiar to them. These visits will enable Leaders to gain first-hand knowledge of the area and facilities which will inform the risk assessment and pre-planning.

Any costs incurred will be included in the total cost of the visit, although some contractors or providers may offer a pre-visit for the Visit Leader free of charge.

Where a pre-visit is not possible, the Principal, advised by the EVC, will determine whether the subsequent risk management plan is acceptable prior to authorisation of the visit. Whether a pre-visit has been carried out or not, the Visit Leader should make a preliminary check of the venue upon arrival, noting any hazards or safety features.

If using the facilities of a contractor, e.g. a tour operator, the Visit Leader should also arrange a meeting with the local representative or manager in order that both parties can be kept fully informed and any concerns can be raised. Any points discussed should be noted in writing.

External providers contracted to run EVs will, wherever possible, hold the LOTC 'Quality Badge' (see drop down menu on eVisit.).

Where an un-badged provider is selected, the Visit Leader must undertake appropriate risk assessment, and will check what other accreditation the provider holds. In this case an OEAP National Guidance [Provider Statement](#), also found on [Transform](#), should be completed and uploaded to eVisit.

In all cases the Visit Leader must assess any likely risks posed by the members of the group. External providers cannot do this.

6. INCLUSION

TGAT supports the inclusion of all pupils on EVs wherever possible.

Visit Leaders must make reasonable adjustments to include would-be participants who have a disability. The risk assessment can include such enabling measures.

Each academy must ensure that practical measures are in place to include pupils with special

educational needs or medical conditions where reasonable and practical. They should have, where possible, the same learning opportunities as the others in the group.

If a child in the group is subject to a care order, the relevant Social Services Department (SSD) should consent to any activity for which parental consent is advised. The SSD should be informed of any other 'learning outside the classroom' activity. The academy should also ensure that foster carers are aware of this so that they can take the necessary action. The SENCO should determine what ratio of supervision the pupil will need for the visit and liaise with the EVC.

Refer to general academy policies and OEAP National Guidance for further information.

7. BEHAVIOUR

7.1. Pupil Code of Conduct

Each academy's 'Behaviour and Discipline Policy' must be complied with by pupils and staff. Where this includes a generic or EV-specific, written Code of Conduct, the Visit Leader should ensure that parents and pupils have signed it.

- TGAT does not allow pupils to consume any alcohol on EVs. The only exception to this may be a Sixth Form visit where alcohol is allowed with meals, in accordance with UK and local law, if overseas. This may only happen with the supervision of staff. Robert Smyth Academy have an addition to this policy to include a blanket ban on any pupil drinking alcohol on a Robert Smyth Academy EV.
- TGAT does not allow smoking of any tobacco products on EVs, including e-cigarettes.
- The possession or use of any drug, other than legal over-the-counter medicines or medically prescribed drugs (pre-advice of which should be given to the staff in charge of the activity), is totally banned and each academy will take a most severe attitude to any departure from this rule.
- TGAT does not allow pupils to participate in sexual activities whilst on EVs. Staff should be aware of any existing or developing pupil relationships and ensure that pupils conduct themselves in accordance with this rule.

Any breach of the above guidelines will be treated with the utmost seriousness and may result in any or all of the following sanctions:

- the pupil being sent home immediately at their parent's expense;
- the pupil being banned from all future trips;
- exclusion.

7.2. Staff Code of Conduct

TGAT and each academy has a formal '[Staff Code of Conduct](#)' which must be complied with.

Every academy expects that all adults acting *in loco parentis* on any academy trip will be mindful of responsible and proper behaviour, so that they are able to exercise their professional judgement at all times.

Every LGB accepts that members of staff may wish to consume alcohol during an off-site visit, provided this is within the UK drink-driving limit. Drinking alcohol above this amount is unacceptable on an EV and may lead to disciplinary proceedings. At all times, there must be at

least one member of staff who is not drinking any alcohol. Robert Smyth Academy have an addition to this policy to include a blanket ban on any member of staff drinking alcohol on a Robert Smyth Academy EV.

Although staff have a 24 hour responsibility for pupil welfare on a residential visit, they cannot all be on duty for 24 hours. The duty roster which the Visit Leader creates must be adhered to. All staff must ensure that they are on duty at the times set down and have the necessary information about the group and the events at that time, which should include emergency contact and medical information. This person cannot drink alcohol during that duty period.

The Visit Leader must ensure that all staff are reminded of the expectations whilst on a visit.

8. FINANCE AND INSURANCE

Financial planning must be approved at the start of the planning process and a completed Finance Form (found on Transform) uploaded to the eVisit system by the Visit Leader. The EVC must check that the form is there and has been completed and signed-off before approving a visit.

8.1. Charging for Visits

Every academy must comply with the TGAT Charging and Remissions Policy.

8.2. Costing of Visits

The Visit Leader is responsible for ensuring that the full costs involved are covered, either by parental contribution or by pre-arranged subvention from academy funds.

The following main costs need to be considered but others may apply, depending on the nature of the journey:

- any cost of cover for absent staff;
- accommodation;
- food;
- travel/transfers;
- excursions;
- administration costs in organising the journey;
- insurance;
- contingencies.

For UK EVs, Visit Leaders should add on a 5% contingency fund to the charge made to the pupils. For overseas trips, this should be a 10% contingency fund.

8.3. Accounts

A record of receipts and payments should be kept and supported wherever possible by documentary evidence.

The records should be available at any time for examination by the Principal or the Executive Finance Officer and will be reviewed annually by the TGAT auditors. They should be retained at the academy for a minimum period of six years.

For all practical purposes, each academy finance office will act as the bank for all EVs. All

income relating to the EV should be passed to the academy finance office and all payments should be requested from them except in circumstances where an alternative system, e.g. of petty cash, has been authorised for the visit by the academy's Finance Manager.

In no circumstances should the personal accounts of members of staff be used for any academy activity.

Where a pupil withdraws from an EV, or is banned from an EV because of bad behaviour, after arrangements have been made, sufficient funds should be withheld from the contributions already made by that pupil's parents in order to cover any irrecoverable costs incurred on the pupil's behalf.

Parents will be informed in the consent letter for the EV of the relevant visit budget, the finance procedures and rules. They will also be given the opportunity to opt out of receiving back any residual funds above £5 per pupil on the EV's return. If leftover money falls below £5 per pupil or parents opt out of receiving their allocation, it will be retained by the academy as contingency for future EVs.

8.4. Insurance

Each academy will ensure that appropriate insurance is always in place to cover employees (Employer Liability Insurance) and the academy's liability to the public (Public Liability Insurance), including pupils.

For simple, UK EVs, the existing insurance should suffice. However, it is the duty of the Visit Leader, followed by the EVC and Principal to ensure that the insurance will cover all activities being undertaken and to arrange additional insurance if they are not.

TGAT's 2018-19 insurance, provided by the DfE's RPA, now covers overseas visits. Tour operators may include additional travel insurance as part of the package they offer, but the responsibility for ensuring that this insurance is suitable lies with each academy. The academy will also determine whether additional insurance needs to be taken out by parents for their children and to inform the parents of this necessity and how it is to be arranged. Each academy must ensure that the travel insurance covers all activities planned on the visit, taking note of specific exclusions such as, for example, some snow sports, driving motor vehicles, high altitude, sub aqua and individuals' pre-existing medical conditions.

For more complex EVs the academy will tell parents what insurance arrangements are in place and ask parents to accept the insurance arrangements through the consent form.

Some parents may cancel their child's place on an extra-curricular activity (one that takes place outside the academy day or term). If the place cannot be refilled the academy should forward the cancellation to the insurer and operator as soon as possible to help to mitigate cancellation charges.

9. EMERGENCY PROCEDURES AND REPORTING INCIDENTS

Pharos Response will help the TGAT put a critical incident plan in place to deal with emergencies on EVs. TGAT will adhere to its policy on reporting accidents/incidents which is informed by the Health and Safety Executive.

In the event of a critical incident or emergency happening on an EV, the academy

communications tree needs to be activated. The Principal should be informed immediately, or if not contactable, a designated member of the SLT.

Pharos Response have in place a 24/7 emergency response service as part of their service agreement with TGAT. Through this service they provide telephone-based critical incident support, which includes: crisis, PR, media and social media consultancy and advice; an overflow call centre in case of a high volume of calls from parents/interested people; a trauma counselling service to staff and pupils and a post-incident investigation and review service to academies. Pharos can also deploy a competent consultant to the location of a critical incident within 24 hours of the incident occurring.

The critical incident team at Pharos Response can be reached on: 01183 800999.